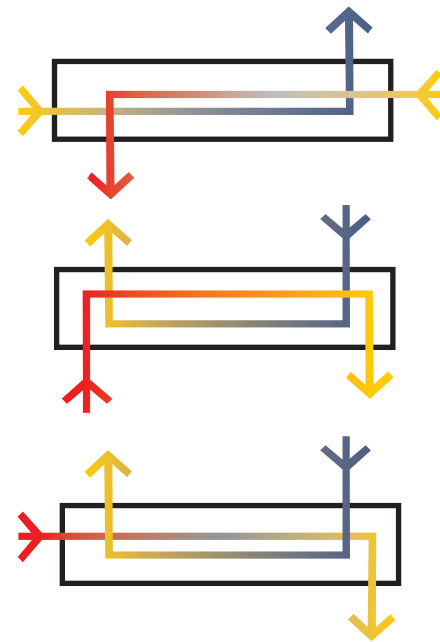
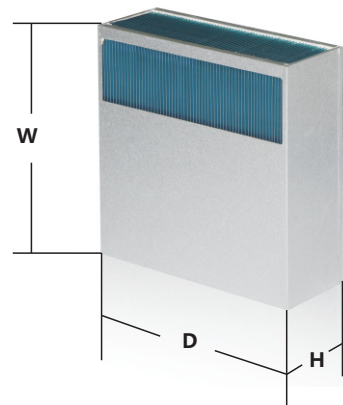
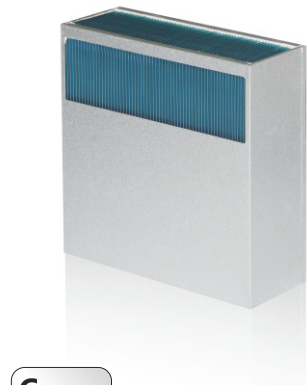




### Heat exchange core of counter-flow type

- Aluminum or epoxy resin coated aluminum;
- The heat exchange core of counter-flow type adopts the ripple metal plate made of aluminum or epoxy resin coated aluminum which forms the turbulence to expedite the heat transmission. The increase on the turbulence will not produce any dirt stagnation point and speed change and thus make full use of the heat exchanger in its best performance;
- The construction of dual L type, dual U type, or L+U type flow may be selected on request for counter-flow heat exchanger.

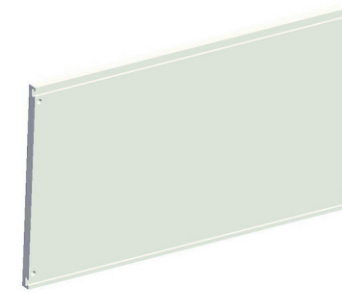


Model No.	Dimensions (W×H×D)			Space between fins
	W	H	D	
HEX400095	400mm	95mm	100-600mm	3.0/4.5/6.0
HEX500095	500mm	95mm	100-600mm	3.0/4.5/6.0
HEX400140	400mm	140mm	100-600mm	3.0/4.5/6.0
HEX500140	500mm	140mm	100-600mm	3.0/4.5/6.0
HEX600140	600mm	140mm	100-600mm	3.0/4.5/6.0
HEX500190	500mm	190mm	100-700mm	3.0/4.5/6.0/7.5
HEX600190	600mm	190mm	100-700mm	3.0/4.5/6.0/7.5
HEX700190	700mm	190mm	100-700mm	3.0/4.5/6.0/7.5
HEX800190	800mm	190mm	100-700mm	3.0/4.5/6.0/7.5
HEX600235	600mm	235mm	100-700mm	3.0/4.5/6.0/7.5
HEX700235	700mm	235mm	100-700mm	3.0/4.5/6.0/7.5
HEX800235	800mm	235mm	100-700mm	3.0/4.5/6.0/7.5
HEX900235	900mm	235mm	100-700mm	3.0/4.5/6.0/7.5
HEX1000235	1000mm	235mm	100-700mm	3.0/4.5/6.0/7.5

- Sheet: aluminum or epoxy resin coated aluminum
- Frame: galvanized steel
- Sealing: organic resin without silicon(the max. temperature 90°C , 190 °F )

### Plate air/water heat exchanger

- Plate conduction cooling is the most direct colling type to replace the bottom panel;
- 25mm ultra-thin size for the most demanding space requirements;
- The design of no noise and condensation ;
- Modular design allows the different environmental requirements and simple product selection.
- Particularly suitable for the centralized installation of inverters;
- It saves the installation space inside enclosure;
- The optional mounting method is available for the electrical equipment to cool: fix it at "T" notch or thread drilling.



ID.NO.	Model No.	Useful cooling capacity	Dimensions (W×H×D)	Enclosure dimensions(WxD)
30400161	PAW2500	2500W	500x400x25mm	600x600mm
30400162	PAW3200	3200W	700x400x25mm	800x800mm
30400163	PAW5000	5000W	900x400x25mm	1000x1000mm
30400164	PAW7000	7000W	1100x400x25mm	1200x1000mm

### Onsite application

